

Outline

The Science Behind Substance Use Disorders
Biopsychosocial aspects of substance abuse
Attachment & trauma
The brain's reward system
How metabolism impacts substance abuse

Signs of Intoxication & Withdrawal Symptoms
Alcohol & other depressants
Stimulants
Opioids
Cannabinoids
Psychoactive plants & chemicals
Inhalants

Assessment of Substance Use Disorders
How to ask sensitive intake questions
Take-home screening tools
Identify substances that mimic other disorders
Spot co-occurring disorders & trauma
How to navigate a high risk of misdiagnosis
Non-invasive drug screenings

Treatment Planning: Determine Level of Care
How to approach level of care decisions
Why detox alone is NOT treatment
Detox protocols
Types of inpatient & outpatient treatment
When is partial hospitalization necessary?
Which treatment level is right for your client?

Recognize & Treat Behavioral/Process Addictions
Compulsive gambling
Compulsive sexual behaviors
Electronic addictions

Treatment of Substance Use Disorders

Strategies to Improve Client Engagement & Treatment Compliance
Motivational interviewing
Reward gains & treatment compliance
Case management: Link the client to resources
Medication-assisted treatment

Psychodynamic Approaches
The role of the ego in addiction & recovery
Identify & confront defense mechanisms
Recognize & heal past trauma

Objectives

1. Appraise the causes of substance use disorders & factors that reinforce drug use as related to case conceptualization.
2. Analyze the basic neurobiology of addictive chemicals and its treatment implications.
3. Categorize commonly misused drugs, including current "street names" of these substances, as related to assessment and treatment planning.
4. Assess the signs and symptoms of substance intoxication and distinguish withdrawal syndromes for each drug class as related to case conceptualization.
5. Perform a clinical assessment to distinguish substance use disorders from other mental health disorders and inform the clinician's choice of treatment interventions.
6. Analyze the various levels of substance use treatment, including medication-assisted therapies, to inform clinical treatment interventions.

Cognitive-Behavioral Interventions
Apply the A-B-C model to substance abuse
Recognize triggers to use
Foster coping skills
Deconstruct negative schemas

Substance Use Disorders & The Family
The family's role in recovery
Family member roles: Enablers & heroes
Overcome family rules that block progress
When the client is shielded from consequences
How & when to engage the entire family

Treatment Strategies for Special Populations
Children & adolescents
Active military & veterans
LGBTQ clients
Pregnant women
Older adults

Group Therapy Strategies
Handling intoxicated members
How group support works differently
Barriers to treatment
Getting people to talk
Spotting dealers within the group
Referring to 12-step groups & alternatives

Legal & Ethical Issues in Treating Substance Use Disorders
Privacy laws & when you should disclose
Impaired practitioners
Working with incarcerated clients
Drug treatment courts
Bias in treating recovering clients
Recognize & address vicarious trauma
Limitations of the research & potential risks

Live Webinar Schedule - both days
(Times listed in Central)

8:00 Program begins

11:50-1:00 Lunch Break

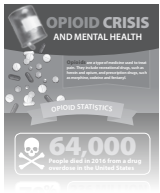
4:00 Program ends

There will be two 15-min breaks (mid-morning & mid-afternoon).
Actual lunch and break start times are at the discretion of the speaker.
A more detailed schedule is available upon request.

7. Evaluate the process of detoxification and its treatment implications.
8. Utilize clinical strategies, such as motivational interviewing, to improve client engagement and foster behavioral change.
9. Modify clinical interventions for use with clients in special populations, such as adolescents or pregnant women.
10. Utilize clinical strategies to engage the client's family in treatment to improve treatment outcomes.
11. Demonstrate strategies used to improve the efficacy of group therapy, such as strategies for addressing disruptive members and building group cohesion.
12. Evaluate ethical and legal issues related to substance use and substance use treatment, including circumstances when you should disclose client records.

Free Infographic

Opioid Crisis and Mental Health



Get yours today at
[pesi.com/1425infographic](https://www.pesi.com/1425infographic)

NON-PROFIT
ORGANIZATION
U.S. POSTAGE PAID
EAU CLAIRE, WI
PERMIT NO. 32729

Group Training Solutions Made Easy!

- ONLINE or in-person
- Customizable
- Easy remote access
- From 5 to 5000
- CE hours available



www.pesi.com/inhouse

PESI, Inc.
P.O. Box 1000
Eau Claire, WI 54702-1000

Certified Addictions-Informed Mental Health Professional (CAIMHP)

Two-Day Intensive Competency Training

LIVE Interactive Webinar

Wednesday & Thursday, December 1 & 2, 2021

BONUS! – Registration includes FREE on-demand access for 3 months.



REGISTER NOW:
pesi.com/webcast/86238

Join us online, for this 2-day live Certification training!

Certified Addictions-Informed Mental Health Professional (CAIMHP)

Two-Day Intensive Competency Training

BECOME A CERTIFIED ADDICTIONS-INFORMED PROFESSIONAL

This seminar meets ALL requirements to become a Certified Addictions-Informed Professional (CAIMHP) through Evergreen Certifications!

Professional standards apply, visit www.evergreencertifications.com/caimhp for full certification details.

Earn your
CERTIFICATION
Today!

- Confidently differentiate between substance use disorders & other mental health disorders
- Utilize diverse, cutting-edge strategies & interventions to engage clients & evoke change
- Know which kind of treatment your client needs—and how to get it delivered

Live Interactive Webinar

Wednesday & Thursday, December 1 & 2, 2021

BONUS! – Registration includes FREE on-demand access for 3 months.



A NON-PROFIT ORGANIZATION CONNECTING KNOWLEDGE WITH NEED SINCE 1979

REGISTER NOW:
pesi.com/webcast/86238

CERTIFIED ADDICTIONS-INFORMED MENTAL HEALTH PROFESSIONAL (CAIMHP)

Two-Day Intensive Competency Training

America is facing an epidemic of substance misuse, but there’s a major obstacle to getting people the help they need: **There’s simultaneously a nationwide lack of training in addiction treatment for professionals and a massive need for people with this training.** These problems are severe; many future mental health providers are graduating without ever completing a single course in substance abuse treatment.

But substance abuse is very much part of the real world of mental health treatment—even if that’s not why your clients came into your office. **Be prepared to recognize substance use and get your clients the help they need.**

Join me, Paul Brasler, LCSW, and I’ll walk you through numerous proven strategies and interventions that you need to effectively recognize and treat substance use disorders.

Attend this program, and through a combination of the latest addiction research and clear examples of treatment, you’ll learn:

- How to differentiate between casual misuse and addiction
- Who you should treat and when you should refer out
- Techniques to improve client engagement and treatment compliance
- How to modify your interventions for use with special clinical populations, including veterans

Best of all, upon completion of this live training, you’ll be eligible to become a **Certified Addictions-Informed Professional** (CAIMHP) through Evergreen Certifications. Certification lets colleagues, employers, and clients know that you’ve invested the extra time and effort necessary to understand the complexities of treating addictions in clients. Professional standards apply. Visit www.evergreencertifications.com/caimhp for details.

Sign up today!

CERTIFICATION MADE SIMPLE! EVERGREEN CERTIFICATIONS

- No hidden fees – PESI pays for your application fee (a \$99 value)*!
- Simply complete this live event and the post-event evaluation included in this training, and your application to be a Certified Addictions-Informed Professional through Evergreen Certifications is complete.*

Attendees will receive documentation of CAIMHP designation from Evergreen Certifications 4 to 6 weeks following the program.

*Professional standards apply. Visit www.evergreencertifications.com/caimhp for professional requirements.



Risk Free Purchase! PESI stands by our trainings and we have a 100% satisfaction guarantee. If you are not satisfied, please contact our customer service team at www.pesi.com/info or 800-726-3888 and we will make it right.

PESI Offers Group Discounts!

To save on groups of 5 or more, contact us at pesi.com/info!

Questions? Visit our FAQ page at www.pesi.com/faq or contact us at www.pesi.com/info.

Have a seminar idea? A manuscript to publish? The nation’s top speakers and authors contact PESI first. If you are interested in becoming a speaker or have a new topic idea, please contact **Claire Zelasko** at czelasko@pesi.com or call **715-855-8194**.

Meet Your Speaker

Paul Brasler, MA, LCSW., has worked in the social work field for the past 22 years. He is the head of behavioral health for Daily Planet Health Services, a Federally Qualified Health Center that provides comprehensive and integrated healthcare and mental health services (including medication-assisted opioid treatment). Paul is also president of Providence Consulting & Education, L.L.C., through which he provides clinical supervision and professional education services.

Paul has extensive experience in working with people with substance use disorders. After finishing school, Paul went to work at an adolescent residential treatment program, where he developed a treatment track for adolescents with substance use disorders. In 2003, he became a senior clinician in the Chesterfield Country Juvenile Drug Court and provided individual, family, adolescent group and multifamily group therapies. After working at the drug court for seven years, Paul moved on to conduct psychiatric and substance misuse evaluations in emergency departments in the Greater Richmond, Virginia area. Paul has also served as adjunct faculty in the school of social work at Virginia Commonwealth University, where he developed a graduate course in substance abuse treatment.

Paul has been a PESI presenter since 2016, and he has presented classes on mental health emergencies and high-risk clients across the county. He recently released his first book, *High-Risk Clients: Evidence-Based Assessment & Clinical Tools to Recognize and Effectively Respond to Mental Health Crises* (PESI Publishing; 2019).

Speaker Disclosure:
Financial: Paul Brasler maintains a private practice. He receives a speaking honorarium from PESI, Inc.
Non-financial: Paul Brasler has no relevant non-financial relationship to disclose.

Target Audience:

Counselors • Social Workers • Psychologists • Addiction Counselors • Marriage & Family Therapists • Nurses • Nurse Practitioners • Case Managers • Physician Assistants
Physicians • Psychiatrists • Paramedics and Other First Responders • Probation/Parole Officers
Police Officers • Clergy

CE CREDITS AVAILABLE FOR LIVE WEBINAR

This continuing education activity is designed to meet state board requirements for the following professionals: **Counselors, Social Workers, Psychologists, Marriage & Family Therapists, Nurses, Physician Assistants, and Physicians.**

For specific credit approvals and details, visit pesi.com/webcast/86238

National CE Credit Approvals For Live Webinar
Credits listed are for full attendance at the live webinar only. The CE certificate can be downloaded/printed after completing the webinar and passing the online post-test evaluation (80% passing score). Please see schedule for full attendance start and end times. NOTE: Boards do not allow credit for breaks or lunch.



PESI, Inc. is accredited by the Accreditation Council for Continuing Medical Education to provide continuing medical education for physicians.



PESI, Inc. is accredited as a provider of nursing continuing professional development by the American Nurses Credentialing Center’s Commission on Accreditation. Nurses in full attendance will earn 12.5 contact hours.



PESI, Inc., #1062, is approved to offer social work continuing education by the Association of Social Work Boards (ASWB) Approved Continuing Education (ACE) program. Organizations, not individual courses, are approved as ACE providers. State and provincial regulatory boards have the final authority to determine whether an individual course may be accepted for continuing education credit. PESI, Inc. maintains responsibility for this course. ACE provider approval period: January 27, 2020 - January 27, 2023. Social Workers completing this course receive 12.5 Clinical continuing education credits. Course Level: Intermediate. Full attendance is required; no partial credits will be offered for partial attendance. A certificate of attendance will be awarded at the end of the program to social workers who complete the program evaluation.

Self-study credit: To check availability for your profession, go to www.pesi.com or call 800-726-3888 with your licensing board to verify acceptance of self-study credit for license renewal.

*Content and materials in this course may include interventions and modalities that are beyond the authorized practice of your profession. As a licensed professional, you are responsible for reviewing the scope of practice, including activities that are defined in law as beyond the boundaries of practice in accordance with and in compliance with your profession’s standards.

PESI, Inc. offers continuing education programs and products under the brand names PESI, PESI Healthcare, PESI Kids, PESI Rehab and Psychotherapy Networker.

Earn up to 12.5 CE Hours for one low price!

For all credit approvals and details, visit: www.pesi.com/webcast/86238

SIGN UP-TODAY!

Choose your Learning Experience!

PESI offers multiple formats to fit your CE needs

Register Online at: pesi.com/webcast/86238

Live Interactive Webinar (Option 1)

December 1 & 2, 2021 PWZ86237

\$439.99 tuition

8am Central time

Live Webinar Experience:

- Participate live in real-time while connecting and collaborating with peers
- Ask the presenter your questions
- Earn a live CE certificate

FREE BONUS: Replay on-demand access for 90-days after webinar

**Live CE is only available when viewed live*

Get a Group Discount! Contact us at pesi.com/info to save for groups of 5 or more

On-Demand Digital Seminar (Option 2)

\$439.99 POS055765

Digital Seminar Experience:

- Learn at your own pace with 24/7 access from your PESI account
- Access to the program materials
- Enjoy lifetime on-demand access
- Earn a self-study CE certificate
CE hours and approvals may vary from live event. Visit www.pesi.com or call 800-726-3888 to check for availability.

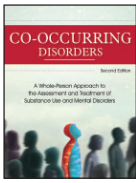
DVD (Option 3)

\$439.99 RNV055765

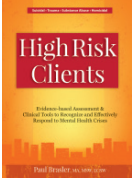
DVD Experience:

- Self-study CE certificate available
CE hours, approvals and cost of CE Certificates may vary from live event. Visit www.pesi.com or call 800-726-3888 to check for availability and pricing

Recommended Reading:



Co-Occurring Disorders
A Whole-Person Approach to the Assessment and Treatment of Substance Use and Mental Disorders, 2nd Edition
By Charles Atkins, MD
~~\$34.99~~ **\$24.99***



High Risk Clients
Evidence-based Assessment & Clinical Tools to Recognize and Effectively Respond to Mental Health
By Paul Brasler, MA, MSW, LCSW
~~\$29.99~~ **\$19.99***

** Discount Included with purchase of the Webinar*

OTHER WAYS TO REGISTER

Phone: 800-726-3888

Fax: 800-554-9775

Mail: PESI, Inc.
PO Box 1000
Eau Claire, WI 54702-1000

*If mailing/faxing registration, find form at www.pesi.com/form or call 800-726-3888

ADA NEEDS

We would be happy to accommodate your ADA needs; Please notify us at time of registration.

QUESTIONS

Visit pesi.com/faq or contact us at pesi.com/info

TAXES AND SHIPPING

Taxes and shipping apply where applicable, see website for details

