

## Outline

### Behavioral Overview

#### Etiology

Nature v. nurture  
Hormones, neuropsychology, behaviorism  
Gender differences  
"Eye of the beholder"

#### DSM-5® Updates

ADHD  
Oppositional defiant disorder  
Conduct disorder  
Autism spectrum disorders  
Bipolar disorder  
Childhood anxiety and depression

#### Medication Interventions

Psycho-stimulants  
Mood stabilizers  
Anti-depressants/anti-anxiety  
Atypical anti-psychotics  
Illegal/illicit substances and treatment effects

### Tools for Helping Behavior Problems

#### Quick Techniques to Manage Anger

Time in!  
Restitution  
The peace table & empathy building  
Actor/observer  
Standing 8 count  
Art of compromise  
...And many more!

#### Quick Techniques to Manage Depression

Cut-n-paste  
The mirror effect  
Inside movie  
Types of journaling  
... And many more!

#### Quick Techniques to Manage Anxiety

Ceiling fan breathing  
Set the clock  
Progressive relaxation  
Top dog/underdog  
... And many more!

## Objectives

1. Utilize effective, clinical techniques for the treatment of behavior disorders in children.
2. Develop specific behavioral interventions that address the developmental stage of the child and adolescent.
3. Consider the efficacy of biologically-based interventions to address behavioral and emotional disorders in children.
4. Explore clinical manifestations among anxiety disorders, ADHD, mood disorders, ODD and Conduct Disorder as it relates to diagnosis.
5. Develop clinical skills for establishing a therapeutic rapport to overcome treatment resistance in children and adolescents.
6. Analyze the diagnostic symptoms of behavioral/emotional disorders in children and adolescents and establish how this informs your choice of intervention strategies.

### Target Audience

Counselors • Social Workers • Psychologists • Marriage and Family Therapists • Speech-Language Pathologists • Teachers  
School Guidance Counselors • Case Managers • Nurses • School Administrators • Educational Paraprofessionals  
Occupational Therapists & Occupational Therapy Assistants • Other Helping Professionals who Work with Children

### Quick Techniques to Manage Autism/Asperger's

Facial expressions and social cues  
Building a broader structure  
The burrito  
Island of Solace  
... And many more!

### Quick Techniques to Manage ADHD

Noise to the system  
Anticipation  
Therapeutic games  
... And many more!

### Techniques to Help the Client's World

#### Parents/Caregivers and Teachers/Schools

Intentional dialogue  
The listening jar  
Time out/quiet time  
Token economies/response cost (and avoiding pitfalls)  
The good behavior game

#### Manage Therapist Frustration

#### Limitations of Research and Potential Risks

### Live Seminar & Webcast Schedule

(Times listed in Mountain)

**7:30** Registration/Morning Coffee & Tea

**8:00** Program begins

**11:50-1:00** Lunch (*on your own*)

**4:00** Program ends

There will be two 15-min breaks (mid-morning & mid-afternoon).  
Actual lunch and break start times are at the discretion of the speaker.  
A more detailed schedule is available upon request.

Questions? Call Customer Service:  
**800-844-8260**

Don't Miss!  
**LIVE VIDEO  
WEBCAST**

**WEDNESDAY**  
July 17, 2019

REGISTER ONLINE  
[pesi.com/webcast/71871](http://pesi.com/webcast/71871)

Bring any training  
in-house!



Convenient • Cost-Effective • Customizable

for more information visit  
[www.pesi.com/inhouse](http://www.pesi.com/inhouse)

NON-PROFIT ORG  
US POSTAGE PAID  
EAU CLAIRE WI  
PERMIT NO 32729

PESI, Inc.  
P.O. Box 1000  
Eau Claire, WI 54702-1000  
A division of PESI, Inc.

OVER **75** QUICK, "ON-THE-SPOT"  
TECHNIQUES FOR CHILDREN AND ADOLESCENTS WITH  
**EMOTIONAL AND BEHAVIORAL  
PROBLEMS**

Over 2/3 of seminar contains  
teachable and proven  
behavior-changing techniques

**BOISE, ID**  
Wednesday, July 17, 2019

**SALT LAKE CITY, UT**  
Thursday, July 18, 2019

**LIVE VIDEO WEBCAST**  
Wednesday, July 17, 2019

**LAS VEGAS, NV**  
Friday, July 19, 2019

REGISTER NOW: [pesi.com/express/71456](http://pesi.com/express/71456)

OVER **75** QUICK, "ON-THE-SPOT"  
TECHNIQUES FOR CHILDREN  
AND ADOLESCENTS WITH  
**EMOTIONAL AND  
BEHAVIORAL  
PROBLEMS**

Over 2/3 of seminar contains  
teachable and proven  
behavior-changing techniques

Featuring  
Steven T. Olivas, Ph.D., HSP  
Nationally-renowned speaker,  
behavior consultant & author

**BOISE, ID**  
Wednesday, July 17, 2019

**SALT LAKE CITY, UT**  
Thursday, July 18, 2019

**LIVE VIDEO WEBCAST**  
Wednesday, July 17, 2019

**LAS VEGAS, NV**  
Friday, July 19, 2019

 **PESI®**  
[www.pesi.com](http://www.pesi.com)

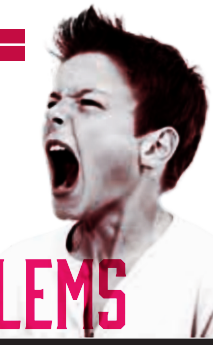
A Non-Profit Organization Connecting Knowledge with Need Since 1979

REGISTER NOW: [pesi.com/express/71456](http://pesi.com/express/71456)

  
Become  
ADHD-CCSP  
Certified!  
Details Inside



# OVER 75 QUICK, "ON-THE-SPOT" TECHNIQUES FOR CHILDREN AND ADOLESCENTS WITH EMOTIONAL AND BEHAVIORAL PROBLEMS



Leaving nothing to the abstract, "75 Quick, 'On-the-Spot' Techniques for Children and Adolescents with Emotional and Behavioral Problems" will guide you through focused, clear and successful methods for treating children. Every professional who seeks to fill their toolbox with tested methods will leave this seminar with a wealth of fresh ideas and rejuvenated spirits.

If you do not have a lot of experience working with children and teens, you will leave with a defined strategy for success. If you are a seasoned professional, you will learn new tricks and techniques to re-energize and revitalize your practice!

With nearly 25 years of clinical experience and a background in improvisational comedy, Dr. Steve is a strong proponent of "Edu-tainment." Namely, he uses charm, wit and humor to enhance your seminar experience, thus improving the retention and utilization of the specific skills covered. We change the world when we touch a child's life!

## Speaker

**Steven T. Olivas, Ph.D., HSP**, nationally renowned speaker, author and behavior consultant, is a licensed psychologist in private practice in Middle Tennessee. He began his practice career in 1991 when ADHD was exploding onto the scene and has enjoyed working with the energy and spontaneous creativity of children ever since. Throughout his career, he has taught courses at nine colleges and universities, been a national public speaker, a regular columnist for a local newspaper and co-host of a popular radio show. He is the author of the book *When Good Kids Go Bad: Effective Solutions for Problem Behaviors* and the acclaimed book *Bad Kids...or Bad Behavior?*

For nearly 25 years, he has been helping clinicians, school systems and parents around the country understand and manage the kids and teens most likely to act out in impulsive and aggressive manners.

### Speaker Disclosures:

Financial: Steven T. Olivas is an author for Premier Publishing & Media and receives royalty payments. He is an author for Author's Corner Publishing and receives royalty payments. He is a speaker who receives an honorarium for PESI, Inc.

Non-financial: Steven T. Olivas has no relevant non-financial relationship to disclose.



PESI, Inc. is proud to offer this seminar (at these locations only) free of charge (on live seminar tuition) for veterans and active duty military personnel. **Advanced online registration required.**



This course counts toward the educational hours required for certification as an ADHD Certified Clinical Services Provider (ADHD-CCSP). Visit [adhdcert.com](http://adhdcert.com) for the full certification requirements.

**Hassle-Free Cancellation Policy:** If you contact us before the event date, you can exchange for a DVD or CD/digital manual package on the subject (self-study continuing education credit may be available), a certificate to attend another seminar, or receive a tuition refund less a \$30 cancel fee. Substitutions are permitted at any time.

**Seminar on CD or DVD Package:** You can purchase a self-study package on the subject. You will receive a set of CDs or DVDs that include a digital copy of the seminar manual and post-test/evaluation. You and your colleagues can receive CE hours for a nominal fee. To determine if homestudy credits are available for your profession go to [www.pesi.com](http://www.pesi.com) or call 800-844-8260. Check with your licensing board to verify acceptance of self-study credits for license renewal. Order today by using the order form on this brochure or by calling 800-844-8260.

**Have a seminar idea? A manuscript to publish?** The nation's top speakers and authors contact us first. If you are interested in becoming a speaker or have a new topic idea, please contact Marnie Sullivan at [msullivan@pesi.com](mailto:msullivan@pesi.com) or call 715-855-8226.

## SAVE BY INCLUDING THESE PRODUCTS WITH SEMINAR REGISTRATION!



**When Good Kids Go Bad: Effective Solutions for Problem Behaviors**

By Steven T. Olivas, Ph.D., HSP

Informative, artful, and fun, *When Good Kids Go Bad* takes readers inside the minds of our troubled kids and teens. Whether they are mildly irritating or well out of control, readers will leave armed with a broad range of proven techniques to curb negative behaviors and encourage positive ones. Therapists, parents, teachers, and all professionals interacting with these kids will have their questions answered and be given clear instructions on how to begin the road to behavioral and emotional change.



**Letting Go of Anger Card Deck: 54 Cards to help teens tame frustration**

By Jeffrey Bernstein

- Simple skills to successfully manage anger
- Tools to calm in emotionally tense moments
- Strategies to overcome anxiety

- Using anger in a healthy way
- Steps to create positive changes

**Seminar Presenter!**

### Live Webcast Details and Live Webcast Continuing Education Credit Information

Join us on July 17, 2019, for this live, interactive webcast!

Invite your entire office and, like a live seminar, "attend" the webcast at its scheduled time. It's easy and convenient! Webcasts provide everything you need for a premier educational experience including real-time video and audio of the speaker. See and hear the speaker, ask questions via email and have them answered during the webcast, and watch the slides all on your computer screen. Seminar materials are available for download. One CE Certificate is included. Certificates of Completion can be printed after completing and passing the on-line post-test evaluation. Additional certificates are available for \$49.99 USD per participant. Please see "live seminar schedule" for full attendance start and end times. NOTE: Boards do not allow credit for breaks or lunch. For CE information for the live webcast, please visit: [www.pesi.com/webcast/71871](http://www.pesi.com/webcast/71871)

### Live Seminar Continuing Education Credit Information

Credits listed below are for full attendance at the live event only. After attendance has been verified, pre-registered attendees will receive an email from PESI Customer Service with the subject line, "Evaluation and Certificate" within one week. This email will contain a link to complete the seminar evaluation and allow attendees to print, email or download a certificate of completion if in full attendance. For those in partial attendance (arrived late or left early), a letter of attendance is available through that link and an adjusted certificate of completion reflecting partial credit will be issued within 30 days (if your board allows). Please see "LIVE SEMINAR SCHEDULE" on this brochure for full attendance start and end times. NOTE: Boards do not allow credit for breaks or lunch.

If your profession is not listed, please contact your licensing board to determine your continuing education requirements and check for reciprocal approval. For other credit inquiries not specified below, or questions on home study credit availability, please contact [cepesi@pesi.com](mailto:cepesi@pesi.com) or 800-844-8260 before the event.

Materials that are included in this course may include interventions and modalities that are beyond the authorized practice of mental health professionals. As a licensed professional, you are responsible for reviewing the scope of practice, including activities that are defined in law as beyond the boundaries of practice in accordance with and in compliance with your profession's standards.

PESI, Inc. offers continuing education programs and products under the brand names PESI, PESI Healthcare, PESI Rehab and Psychotherapy Networker.

**COUNSELORS:** Over 75 Quick "On-The-Spot" Techniques for Children and Adolescents with Emotional and Behavior Problems has been approved by NBCC for NBCC credit. PESI, Inc. is solely responsible for all aspects of the program. NBCC Approval No. SP-3200. PESI is offering this activity for 6.5 clock hours of continuing education credit.

**NEVADA COUNSELORS & MARRIAGE AND FAMILY THERAPISTS:** This program has been submitted to the State of Nevada Board of Examiners for Marriage and Family Therapists for review. Credit is pending.

**EDUCATORS/TEACHERS:** This course is designed to qualify toward your professional development requirement. The program is 6.25 clock hours in length.

**ARIZONA TEACHERS:** This course is designed to qualify for 6.25 clock hours of Professional Development. This certificate is proof of your attendance. Please retain it in your records or use for submission as proof of completion when required.

**MARRIAGE & FAMILY THERAPISTS:** This activity consists of 380 minutes of continuing education instruction. Credit requirements and approvals vary per state board regulations. You should save this course outline, the certificate of completion you receive from the activity and contact your state board or organization to determine specific filing requirements.

**NURSES/NURSE PRACTITIONER/CLINICAL NURSE SPECIALISTS:** PESI, Inc. is accredited as a provider of continuing nursing education by the American Nurses Credentialing Center's Commission on Accreditation.

Nurses in full attendance will earn 6.3 contact hours. Partial contact hours will be awarded for partial attendance.

**OCCUPATIONAL THERAPISTS & OCCUPATIONAL THERAPY ASSISTANTS:** PESI, Inc. is an AOTA Approved Provider of continuing education. Provider #: 3322. Full attendance at this course qualifies for 6.0 contact hours or .6 CEUs in the Category of Domain of OT and Occupational Therapy Process. Partial credit will be issued for partial attendance. The assignment of AOTA CEUs does not imply endorsement of specific course content, products, or clinical procedures by AOTA. Course Level: Intermediate.


**PSYCHOLOGISTS:** This activity consists of 6.0 clock hours of continuing education instruction. The following state psychologist boards recognize activities sponsored by PESI, Inc. as an approved ACCME provider: Alaska, Arkansas, California, Colorado, Georgia, Illinois, Indiana, Kentucky, Maine, Maryland, Missouri, Nebraska, Nevada, New Hampshire, New Jersey, New Mexico, Oklahoma, Pennsylvania, South Carolina and Wisconsin. Certificates of attendance will be issued for

you to submit to your state licensing board to recognize for continuing education credit. Full attendance is required; no partial credits will be offered for partial attendance.

PESI, Inc. is accredited by the Accreditation Council for Continuing Medical Education to provide continuing medical education. PESI, Inc. designates this live activity for a maximum of 6.0 AMA PRA Category 1 Credit(s)™. Physicians should only claim credit commensurate with the extent of their participation in the activity.

**CALIFORNIA PSYCHOLOGISTS:** PESI, Inc. is approved by the CPA OPD to sponsor continuing education for psychologists. Provider #PES010. PESI maintains responsibility for this program and its contents. PESI is offering this live activity for 6.25 hours of continuing education credit. Full attendance is required; no partial credits will be offered for partial attendance.

**APPROVED PROVIDER**



PESI, Inc. is approved by the Continuing Education Board of the American Speech-Language-Hearing Association (ASHA) to provide continuing education activities in speech-language pathology and audiology. See course information for number of ASHA CEUs, instructional level and content area. ASHA CE Provider approval does not imply endorsement of course content, specific products or clinical procedures.

**SPEECH-LANGUAGE PATHOLOGISTS:** This course is offered for .6 ASHA CEUs (Intermediate level, Professional area).

\*\* Please note that Speech-Language Pathologists & Audiologists must complete the post-test and evaluation within two weeks of attending the live webcast if they would like their participation submitted to the ASHA CE Registry. Detailed instructions will be provided the day of the program under the Handouts section of the online program.

**SOCIAL WORKERS:** PESI, Inc., #1062, is approved to offer social work continuing education by the Association of Social Work Boards (ASWB) Approved Continuing Education (ACE) program. Organizations, not individual courses, are approved as ACE providers. State and provincial regulatory boards have the final authority to determine whether an individual course may be accepted for continuing education credit. PESI, Inc. maintains responsibility for the course. ACE provider approval period: January 27, 2017 - January 27, 2020. Social Workers completing this course receive 6.25 Clinical Practice continuing education credits for completing this course. Course Level: Intermediate. A certificate of attendance will be awarded at the end of the program to social workers who complete the program evaluation. Full attendance is required; no partial credits will be offered for partial attendance.

**OTHER PROFESSIONS:** This activity qualifies for 380 minutes of instructional content as required by many national, state and local licensing boards and professional organizations. Save your course outline and certificate of completion, and contact your own board or organization for specific requirements.

QUESTIONS? Call 800-844-8260 or e-mail us at [info@pesi.com](mailto:info@pesi.com).

## How to Register:

OVER 75 QUICK, "ON-THE-SPOT" TECHNIQUES FOR CHILDREN AND ADOLESCENTS WITH EMOTIONAL AND BEHAVIORAL PROBLEMS

### ONLINE

[pesi.com/express/71456](http://pesi.com/express/71456)

### PHONE

800-844-8260

Please have credit card available

### FAX

800-554-9775

### MAIL

PESI, Inc.  
PO BOX 1000  
Eau Claire, WI  
54702-1000

**1 Please complete entire form** (to notify you of seminar changes): *please print; staple duplicate forms.*

#### Mail Code:

See mail code box on address panel on reverse side

Name \_\_\_\_\_ Profession \_\_\_\_\_

Employer Name \_\_\_\_\_

Employer Address \_\_\_\_\_

Dept./Floor/Suite \_\_\_\_\_

City \_\_\_\_\_ County \_\_\_\_\_

State \_\_\_\_\_ Zip \_\_\_\_\_

Home/Cell Ph ( ) \_\_\_\_\_

Dept. Ph ( ) \_\_\_\_\_

\*E-mail address \_\_\_\_\_

\*Registrant's e-mail is required to receive your certificate of completion and registration confirmation.

**2 Check location:** (make copy of locations)

**BOISE, ID**

July 17, 2019

71456BOI

Boise Centre

850 West Front Street • 83702

(208) 336-8900

**LIVE VIDEO WEBCAST**

July 17, 2019

PLW71456

Broadcast LIVE to your computer!

**SALT LAKE CITY, UT**

July 18, 2019

71456SLC

DoubleTree Salt Lake City Airport

5151 Wiley Post Way • 84116

(801) 539-1515

**LAS VEGAS, NV**

July 19, 2019

71456LVE

Embassy Suites Convention Center Las Vegas

3600 Paradise Road • 89169

(702) 893-8000

PLEASE RETURN ENTIRE REGISTRATION FORM

**REGISTER NOW: [pesi.com/express/71456](http://pesi.com/express/71456)**

### ADA NEEDS

We would be happy to accommodate your ADA needs; please call at least two weeks prior to the seminar date.

### WALK-INS

Walk-ins are welcome but admission cannot be guaranteed. Call M-F 7:00-6:00 Central Time for space availability if registering within one week of seminar.

### TUITION OPTIONS

• **FREE Military Tuition:** PESI, Inc. is proud to offer this seminar (at these locations only) free of charge (on live seminar tuition) for veterans and active duty military personnel. **Advanced online registration required.**

• **\$30 Tuition:** If you are interested in being our registration coordinator for the day, go to: [www.pesi.com/coord](http://www.pesi.com/coord) for availability and job description, or call our Customer Service Dept. at 800-844-8260.

• **Groups of 5 or more:** Call 800-844-8260 for discounts.

• **Discounted Student Rate:** As part of its mission to serve educational needs, PESI, Inc. offers a reduced rate of 50% off standard tuition for students. Enclose a current student schedule with registration form. Go to [www.pesi.com/students](http://www.pesi.com/students) or call 800-844-8260 for details. **Advance registration required.** *Cannot be combined with other discounts.*

**3 Check tuition:**

**TUITION** with seminar manual

**\$199.99** – choose one of the options below:

- per person for 2 or more preregistering together —OR—
- single registration postmarked 3 weeks prior to seminar date

**\$229.99** standard

### ADD-ON PRODUCTS

Distributed at seminar—FREE SHIPPING!

**\$19.95\*** *When Good Kids Go Bad* book

**\$16.99\*** *Letting Go of Anger Card Deck*

\*Attendees add applicable state and local taxes except in AK, DE, MT, NH, OR

### WEBCAST with downloadable seminar manual

**\$199.99** registration (+ tax in HI, MN, NM, PA, WI)

**\$20.00** IL ISBE Certificate Processing Fee

For more information on this fee contact [cepesi@pesi.com](mailto:cepesi@pesi.com)

**4 Indicate method of payment:**

**ALL REGISTRATIONS MUST BE PREPAID.** Purchase orders welcome (attach copy).

Check enclosed payable to **PESI, Inc.**

MC  VISA  AE  Discover Novus

16 digits 13-16 digits 15 digits 16 digits

Card # \_\_\_\_\_

Card Exp. \_\_\_\_\_ V-Code #\*: \_\_\_\_\_

Signature \_\_\_\_\_

(\*MC/VISA/Discover: last 3-digit # on signature panel on back of card.)

(\*American Express: 4-digit # above account # on face of card.)

CAN'T ATTEND THE SEMINAR? See below for individual product orders

**Over 75 Quick, "On-the-Spot" Techniques for Children and Adolescents with Emotional and Behavioral Problems**

\_\_\_ Seminar on DVD\* (video) \$199.99 (RNV041280)

\_\_\_ Seminar on CD\* (audio) \$169.99 (RNA041280)

\_\_\_ *When Good Kids Go Bad* book\* \$19.95 (PUB044310)

\_\_\_ *Letting Go of Anger Card Deck*\* \$16.99 (PUB085305)

CE hours and approvals on products may differ from live CE approvals. Product total \$ \_\_\_\_\_

\*Shipping is \$6.95 first item \_\_\_\_\_

+ \$2.00 each add'l item. **Subtotal** \_\_\_\_\_

\*\*Residents add applicable state and local taxes except in AK, DE, MT, NH, OR. **\*\*Tax** \_\_\_\_\_

**TOTAL** \_\_\_\_\_



FOR OFFICE USE ONLY

Fed ID # 26-3896894 © 2019 PESI, Inc. MS