

Meet Your Speaker

Joe Kort, Ph.D., LMSW, is a board certified sexologist and the founder of The Center for Relationship and Sexual Health, and runs a private practice in Royal Oak, Michigan.

Dr. Kort, a therapist, coach and author, has been practicing psychotherapy for over 25 years and has spoken internationally on the subject of gay counseling. He specializes in sex therapy, gay affirmative psychotherapy, sexually compulsive behaviors, and IMAGO relationship therapy designed for couples to enhance their relationship through improved communication. Dr. Kort is a blogger for the *Huffington Post* and *Psychology Today* on issues of sexuality. He has been a guest on the various television programs on mixed orientation marriages and "sexual addiction". Dr. Kort is the author of several books, including, *Gay Affirmative Therapy for the Straight Clinician*, *10 Smart Things Gay Men Can Do To Improve Their Lives*, *10 Smart Things Gay Men Can Do To Find Real Love*, and *Is My Husband Gay, Straight or Bisexual*.

Speaker Disclosure:
Financial: Joe Kort is President of Joe Kort & Associates, PC. He receives a speaking honorarium from PESI, Inc.
Non-financial: Joe Kort has no relevant non-financial relationship to disclose.



"This was a wonderful, informative workshop. Presenter's delivery was great, open and created comfortable environment."

Nancy – Social Worker

Live Seminar Continuing Education Information

Credits listed below are for full attendance at the live event only. Certificates of Completion are distributed at the conclusion of the live seminar for those who register prior to the event date and attend the full day. A letter of attendance will be issued to participants who register at the event, arrive late, or leave early. For those who registered day of (walk-ins), and are in full attendance, a certificate of completion for full CE credit will be sent within 30 days following the event. For those in partial attendance (arrived late or left early), an adjusted certificate of completion reflecting partial credit will be issued within 30 days (if your board allows). Please see "live seminar schedule" for full attendance start and end times. NOTE: Boards do not allow credit for breaks or lunch.

If your profession is not listed, please contact your licensing board to determine your continuing education requirements and check for reciprocal approval. For other credit inquiries not specified below, or questions on home study credit availability, please contact cepesi@pesi.com or 800-844-8260 before the event.

Materials that are included in this course may include interventions and modalities that are beyond the authorized practice of mental health professionals. As a licensed professional, you are responsible for reviewing the scope of practice, including activities that are defined in law as beyond the boundaries of practice in accordance with and in compliance with your professions standards.

PESI, Inc. offers continuing education programs and products under the brand names PESI, PESI Healthcare, PESI Rehab and Psychotherapy Networker.

CULTURAL COMPETENCY: This seminar qualifies for 6.25 hours of cultural competency instruction. If cultural competency is not specified within your licensing board's approval statement below, please contact your board to determine the applicability and amount of cultural competency allowed.

ADDICTION COUNSELORS: This course has been approved by PESI, Inc., as a NAADAC Approved Education Provider, for 6.0 CE in the Counseling Services skill group. NAADAC Provider #77553. PESI, Inc. is responsible for all aspects of their programming. Full attendance is required; no partial credit will be awarded for partial attendance.

COUNSELORS: This intermediate activity consists of 6.25 clock hours of continuing education instruction. Credit requirements and approvals vary per state board regulations. Please save the course outline, the certificate of completion you receive from the activity and contact your state board or organization to determine specific filing requirements.

TEXAS COUNSELORS: PESI, Inc. has been approved as a continuing education sponsor through the Texas State Board of Examiners of Professional Counselors. Provider #: 2477. This course qualifies for 6.0 continuing education credits.

MARRIAGE & FAMILY THERAPISTS: This activity consists of 380 minutes of continuing education instruction. Credit requirements and approvals vary per state board regulations. You should save this course outline, the certificate of completion you receive from the activity and contact your state board or organization to determine specific filing requirements.

TEXAS MARRIAGE & FAMILY THERAPISTS: PESI, Inc. has been approved as a continuing education sponsor through the Texas State Board of Examiners of Marriage and Family Therapists. Provider #: 503. This course qualifies for 6.0 continuing education credits.

NURSE/NURSE PRACTITIONERS/CLINICAL NURSE SPECIALISTS: This activity meets the criteria for a American Nurses Credentialing Center (ANCC) Activity PESI, Inc. is an approved provider by the American Psychological Association, which is recognized by the ANCC for behavioral health related activities.

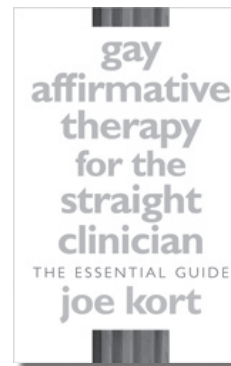
This activity qualifies for 6.25 contact hours.

PSYCHOLOGISTS: PESI, Inc. is approved by the American Psychological Association to sponsor continuing education for psychologists. PESI maintains responsibility for this program and its content. PESI is offering this activity for 6.25 hours of continuing education credit. Full attendance is required; no partial credits will be offered for partial attendance.

SOCIAL WORKERS: PESI, Inc. Provider #1062, is approved as a provider for social work continuing education by the Association of Social Work Boards (ASWB), www.aswb.org through the Approved Continuing Education (ACE) Program. PESI, Inc. maintains responsibility for the program. ASWB Approval Period: January 27, 2017 - January 27, 2020. Social workers should contact their regulatory board to determine course approval for continuing education credits. Social workers participating in this course will receive 6.25 (Cultural Competency) continuing education clock hours for this intermediate course. A certificate of attendance will be awarded at the end of the program to social workers who complete the program evaluation.

OTHER PROFESSIONS: This activity qualifies for 380 minutes of instructional content as required by many national, state and local licensing boards and professional organizations. Save your course outline and certificate of completion, and contact your own board or organization for specific requirements.

Save by including these products with seminar registration!

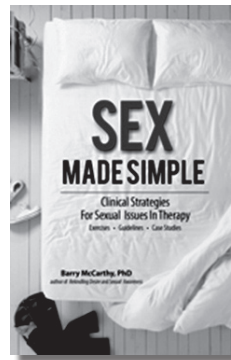


Gay Affirmative Therapy for the Straight Clinician: The Essential Guide

By Joe Kort, Ph.D., LMSW

Your presenter!

All the answers straight clinicians need to work effectively with gay and lesbian clients. It has been over three decades since the American Psychiatric Association removed homosexuality as a category of deviant behavior from the DSM. Same-sex marriage is recognized in certain states, gay-straight alliances are springing up in high schools across the country, and major religious denominations are embracing gay clergy. Yet despite the sea change of attitudes toward homosexuality, many well-meaning straight therapists are still at a loss as to how to effectively counsel their gay and lesbian clients. This book will offer straight therapists the tools they need to counsel gay and lesbian clients effectively.



Sex Made Simple:

Clinical Strategies for Sexual Issues in Therapy

By Barry McCarthy, Ph.D., ABPP

A comprehensive guide to healing sexual issues and dysfunction, with dozens of strategies, techniques and methods to promote healthy sexuality for couples and individuals. Including - tools for couples to maintain strong, resilient sexual desire, strategies to move past affairs, sexual trauma, variant arousal, and psychobiosocial model for assessment, treatment, and relapse prevention.

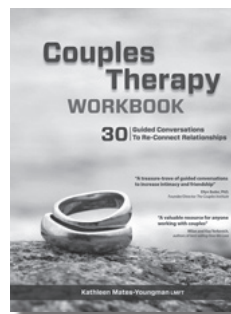


Mindfulness Tools for Gay Men In Therapy:

A Clinician's Guide for Mind-Body Wellness

By Rick Miller, LICSW

Mindfulness Tools for Gay Men in Therapy is designed to free your clients from shame, find safety, peace, and be truly himself. International trainer, author and gay male psychotherapist, Rick Miller, LICSW, utilizes over 30 years of personal and clinical experience to deliver an interactive book that successfully integrates mindfulness, meditation and self-exploration to accelerate the power of therapy.



Couples Therapy Workbook:

30 Guided Conversations to Re-Connect Relationships

By Kathleen Mates-Youngman, LMFT

A series of scripted questions to promote meaningful couple conversations and build ongoing, connect communication. 30 guided conversations of the most critical relationship struggles. For each of the 30 topics, there is an introduction, goal-setting strategies and 10 scripted questions to ask each other - all presented in an easy-to-use mindful style.

Questions?

Call customer service at
800-844-8260

More info and resources at
www.pesi.com/bookstore

Hassle-Free Cancellation Policy:

If you contact us before the event date, you can exchange for a DVD or CD/digital manual package on the subject (self-study continuing education credit may be available), a certificate to attend another seminar, or receive a tuition refund less a \$30 cancel fee. Substitutions are permitted at any time.



Applications of the Adult
Attachment Interview

DR. DAN SIEGEL

1.5 CE HOUR

HURRY OFFER EXPIRES

August 15, 2017

www.pesi.com/siegel-free



Earn CE where you work! Bring this training & many others to your facility!
www.pesi.com/inhouse

55981

NON-PROFIT ORG
US POSTAGE PAID
EAU CLAIRE, WI
PERMIT NO 32729

PESI
P.O. Box 1000
Eau Claire, WI 54702-1000
A Division of PESI, Inc.

Lesbian, Gay, Bisexual, Transgender and Questioning (LGBTQ) Clients: Clinical Issues and Treatment Strategies

- Avoid the top mistakes therapists make
- Become the go-to LGBTQ therapist
- Be on top of the up-to-date language and terms

Austin, TX
Monday, September 18, 2017

Houston, TX
Tuesday, September 19, 2017



Register now! **pesi.com/express/55981**

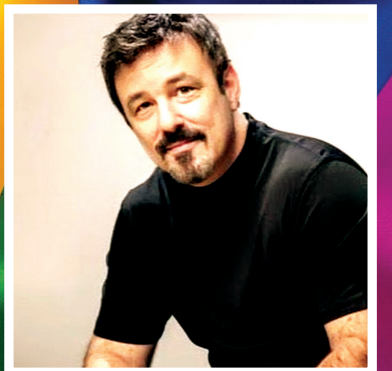
Lesbian, Gay, Bisexual, Transgender and Questioning (LGBTQ) Clients: Clinical Issues and Treatment Strategies

- Avoid the top mistakes therapists make
- Become the go-to LGBTQ therapist
- Be on top of the up-to-date language and terms

Earn 6.25 Cultural
Competency CE Hours

Austin, TX
Monday, September 18, 2017

Houston, TX
Tuesday, September 19, 2017



Featuring Joe Kort Ph.D., LMSW
International Speaker, Author and Expert



Register now! **pesi.com/express/55981**

A NON-PROFIT ORGANIZATION CONNECTING
KNOWLEDGE WITH NEED SINCE 1979

Lesbian, Gay, Bisexual, Transgender and Questioning (LGBTQ) Clients: Clinical Issues and Treatment Strategies

Are you making the biggest mistake treating your LGBTQ clients? Are you pushing them to “come out”? And if you are...you could be traumatizing your clients.

Like you, I made the same mistake early in my career of forcing my clients to name and claim their sexual identity.

Like you, I didn’t know how to ask them about their sexual practices. And when I tried, I offended them.

Come to my workshop and I will equip you with the right tools and up-to-date information you need in this **rapidly changing population** to more effectively counsel your lesbian, gay, bisexual, transgender and questioning clients, and couples.

You will learn specific strategies to better treat the unique challenges your client may be facing such as:

- self-acceptance and internalized homophobia
- non hetero-normative sexual behaviors and practices
- trauma and abuse from growing up LGBTQ
- the difficult process of coming out

Also, let me help you avoid the common mistake of believing, “a couple is a couple” and treating LGBTQ couples the same as their heterosexual counterparts.

Don’t be the straight therapist that is losing LGBTQ clients because of poor intake, assessment and treatment planning. Learn how to offer your clients a safe place for therapy.

I look forward to meeting you at my workshop!

Joe Kort, Ph.D., LMSW

Don't miss this valuable opportunity to learn from a leading expert in the field!

“Brilliant presenter, could have kept listening for days!”

Tamara – Counselor

“Joe was an excellent presenter! He knew his subject, used humor well, and was available to answer any questions – thanks!”

Sue – Social Worker

“I feel that I gained a lot of good info for my clients”

Angie – Counselor

“Best program I have been to!”

Christina – Psychologist

Outline

Do No Harm: Make Your LGBTQ Client Feel Safe & Respected in Therapy Red-flag words: Offensive words you might use (without you knowing!) Intake session: questions about developing identity Strategies to establish rapport and comfort Tips for discussing sex and sexuality Talk About Sex! Don't miss out on key info by ignoring the sex talk Top or bottom? And other important questions to ask: flexible, changing sexual preferences and attractions Varieties of sexuality Protect the client from your own biases and assumptions Coming Out Stigma and its impact on mental health from childhood to adulthood 6 distinct stages with interventions Navigate the 3 phases of coming out to avoid isolation and alienation Fear, shame and rejection unique to this population Relationship concerns: family, friends, school or workplace Finding a sense of belonging in LGBTQ community Harmful and dangerous effects of conversion therapy	LGBTQ Adolescence Coming out issues It gets better but not before coming out Bullying and other safety issues contributing to PTSD Harm reduction adult dating apps such as Grindr, Scruff, etc. Risk assessment for substance abuse Assess for suicidality Finding support Gay Male Develop a treatment plan and goals for unique challenges growing up gay male Accurate assessment of alcohol use with this high risk population HIV & STI prevention strategies and risk and harm reduction Generational differences informing different treatment plans Internalized homophobia Learn specific sexual terminology to avoid alienating your client	
---	--	--

Objectives

1. Assess psychological trauma of growing up gay, lesbian, bisexual, transgender and questioning.

2. Determine the specific and most common stages of coming out to accurately assist your client.

3. Verify common misdiagnosed mental health disorders and assessments.

4. Use specific interventions and assessment tools for LGBTQ clients and gay affirmative therapy.
5. Devise which interventions will work when working with different generations.

6. Determine contemporary perspectives of Lesbian and Gay couples.

7. Formulate strategies for LGB couples on compatibility, incompatibility, frequency and satisfaction.

Lesbian Develop a treatment plan and goals for unique challenges growing up lesbian Specific terminology that is helpful and damaging in this population Sex and sexuality: what to know, what to ask Strategies to manage gender dynamics Internalized homophobia manifests in development	Questioning Avoid mislabeling a client and leading them down the wrong sexual identity path Differentiate between sexual fluidity from bisexuality, gay and lesbian identities Differentiate between sexual identity, sexual behavior and sexual fantasies Working with LGB Couples Dynamics of a same gendered couple including vulnerabilities and strengths Coming out discrepancy causing turbulence for couples Recognize and identify how internalized homophobia creates conflicts Open relationships in gay male couples Sexual issues and strategies on compatibility, incompatibility, frequency and satisfaction	Working with Mixed Orientation Couples and Relationships Specific stages of coming out as a mixed orientation couple Specialized treatment programs for the straight spouses Helping LGBTQ spouse integrate their identity into their mixed orientation relationships Learn how to identify which couples will succeed and which won't
---	--	---


Seminar on CD or DVD Package:
If you cannot attend this seminar, you can purchase a self-study package on the subject. You will receive a set of CDs or DVDs that include a digital copy of the seminar manual and post-test/evaluation. You and your colleagues can receive CE hours for a nominal fee. To determine if homestudy credits are available for your profession go to www.pesi.com or call 800-844-8260. Check with your licensing board to verify acceptance of self-study credits for license renewal. Order today by using the order form on this brochure or by calling 800-844-8260.

Live Seminar Schedule

7:30 Registration/Morning Coffee & Tea
8:00 Program begins
11:50-1:00 Lunch (*on your own*)
4:00 Program ends

For locations and maps, go to www.pesi.com, find your event, and click on the seminar title.

Target Audience Counselors • Social Workers • Psychologists • Psychotherapists • Case Managers
Marriage & Family Therapists • Nurses • Addiction Counselors • Other Mental Health Professionals

 **Have a seminar idea? A manuscript to publish?** The nation's top speakers and authors contact PESI first. If you are interested in becoming a speaker or have a new topic idea, please contact **Emily Krumenauer** at ekrumenauer@pesi.com or call **715.855.8167**.

QUESTIONS? Call **800-844-8260** or e-mail us at info@pesi.com.

How to Register:

ONLINE

pesi.com/express/55981

PHONE

800-844-8260
Please have credit card available

FAX

800-554-9775

MAIL

PESI
PO BOX 1000
Eau Claire, WI
54702-1000

1 Please complete entire form (to notify you of seminar changes):
please print; staple duplicate forms.

Mail Code: _____
See mail code box on address panel on reverse side

Name _____ Profession _____

Employer Name _____

Employer Address _____

Dept/Floor/Suite _____

City _____ County _____

State _____ Zip _____

Home/Cell Ph () _____

Dept. Ph () _____

E-mail address _____

2 Check location: (*make copy of locations*)

☐ **AUSTIN, TX**
September 18, 2017 [55981AUS]
Omni Austin Hotel Southpark
4140 Governor's Row • 78744 • (512) 448-2222

☐ **HOUSTON, TX**
September 19, 2017 [55981HOU]
Holiday Inn Houston-Intercontinental Airport
15222 JFK Blvd • 77032 • (281) 449-2311

Register now!
pesi.com/express/55981

3 Check tuition:

TUITION WITH SEMINAR MANUAL
\$199.99 – choose one of the options below:

☐ per person for 2 or more preregistering together —OR—

☐ single registration postmarked 3 weeks prior to seminar date

☐ **\$219.99** standard

ADD-ON PRODUCTS
Distributed at seminar—FREE SHIPPING!

☐ **\$32.00*** *Gay Affirmative Therapy for the Straight Clinician* book

☐ **\$19.99*** *Sex Made Simple* book

☐ **\$24.99*** *Mindfulness Tools for Gay Men In Therapy* book

☐ **\$24.99*** *Couples Therapy Workbook*

*Attendees add applicable state and local taxes except in AK, DE, MT, NH, OR

4 Indicate method of payment:

ALL REGISTRATIONS MUST BE PREPAID. Purchase orders welcome (attach copy).

☐ Check enclosed payable to **PESI, Inc.**

☐ MC ☐ VISA ☐ AE ☐ Discover Novus

16 digits 13-16 digits 15 digits 16 digits

Card # _____


Card Exp. _____ V-Code #*: _____

Signature _____

(^{*}MC/VISA/Discover: last 3-digit # on signature panel on back of card.)
(^{*}American Express: 4-digit # above account # on face of card.)

CAN'T ATTEND THE SEMINAR? See below for individual product orders

Lesbian, Gay, Bisexual, Transgender and Questioning (LGBTQ) Clients: Clinical Issues and Treatment Strategies	
___ Seminar on DVD* (video) \$199.99 (RIN046550)	___ Seminar on CD* (audio) \$169.99 (RNA046550)
___ <i>Gay Affirmative Therapy for the Straight Clinician</i> book* \$32.00 (SAM082160)	
___ <i>Sex Made Simple</i> book* \$19.99 (PUB083835)	
___ <i>Mindfulness Tools for Gay Men In Therapy</i> book* \$24.99 (PUB084585)	
___ <i>Couples Therapy Workbook</i> * \$24.99 (PUB083085)	
	Product total \$ _____
	*Shipping _____
	Subtotal _____
	**Tax _____
	TOTAL _____
<small>*Shipping is \$6.95 first item + \$2.00 each add'l item. **Residents add applicable state and local taxes except in AK, DE, MT, NH, OR</small>	

 FOR OFFICE USE ONLY
Fed ID # 26-3896894 © 2017 PESI, Inc. **EK**